



A Charging Bank charges multiple lamps together. All our Cordless Caplamps and Helmet Lamps are compatible for all charging banks, except external models. Charging banks are compact, light weight, high capacity, low current and easy to use. The automatic over-load protection function in each charging unit will cut off the charging circuit when the lamp is fully charged and therefore you never need to intervene in the charging process once you start it. Each charging unit has an indicator for charging process.

CB8E is an 8-unit dual power charging facility to charge KC3E-Ex and KH3E-Ex lamps. It can charge up to 8 lamps together with either 240V AC mains power or via the cigarette lighter in any vehicle with 12/24V DC vehicle power. You can also power the CB8E with your own 12~24V DC power supply >30W.



TYPICAL APPLICATIONS

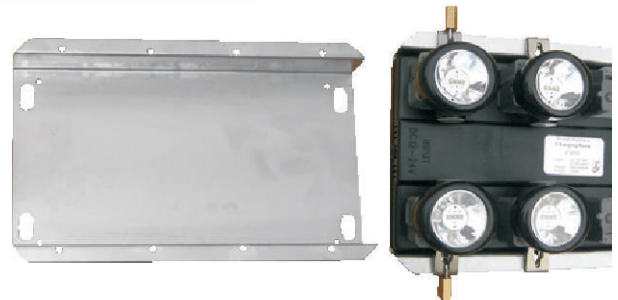
- ▲ Mines: Any applications with small groups of lamps such as a small mine, CPP or workshop; in remote operations where the mains power is not available such as drilling; charging lamps can be performed in a fresh-air area underground where the 240 VAC power is not convenient.
- ▲ Rescue operations: Back at the base, it can be connected to the mains power to charge the lamps and also keep the lamps in stand-by state. If in a fire-rescue truck or other mobile site, the lamps can be charged from the cigarette lighter in the truck.
- ▲ General situations: Contractors, specialised personnel, admin, visitor requirements, etc, that is for any situation that requires convenience, flexibility, and portability.

LOCKING PLATE - OPTIONAL

The Locking Plate is an optional accessory, and can be mounted on the back of the CB8E. Each individual lamp can be locked onto the plate, offering greater security from the theft. There are two different types of Locking Plates for the different lamp clips. Upon ordering, please specify whether your lamp clips are U-Shape clips or the standard type.

Package contents: 1 Plate and 8 Pad Locks.

Models: CB8E-LPU for lamps using U-Shape lamp clips
CB8E-LPS for lamps using standard lamp clips



CHARGING PROCEDURE

There are two Charging Indicators as follows:

LCI (Lamp Charging Indicator): LCI is in the lamp. It only indicates whether the charging power is connected or not. It is always in red.

CCI (Charger Charging Indicator): CCI is on the charging bank or on the charger. It indicates the charging stages in two colours, by detecting the charging current. Green - No or small charging current; Red - Large charging current.

- a) Find a charging unit without lamp. The corresponding CCI should be 'on' in green;
- b) Turn off the lamp;
- c) Plug the charging cable into the charging socket of the lamp and hook the lamp on the unit;
- d) The LCI should turn on; Otherwise, check the connection;
- e) The CCI should turn red, indicating the initial charging stage if the lamp battery level is low;
- f) After a few hours, the CCI will turn the colour in red and green alternatively, indicating the late charging stage;
- g) When the CCI stays in 'green', the charging process is completed and the lamp is fully charged.

SPECIFICATIONS

Input 1:	AC 90~265V
Input 2:	DC 12~24V
Output:	DC 5.1V / 500mA
Power Consumption:	< 30 W
Dimension:	330 x 210 x 55mm
Weight:	1,1kg

PACKAGE CONTENTS

- ▲ Charging bank;
- ▲ Power cord to Mains power;
- ▲ Power cord to vehicle cigarette lighter;
- ▲ Instruction.